



# Stanford Trauma Program

---

Level 1 Adult Trauma Center  
Level 1 Pediatric Trauma Center  
*Since 1986*

*Denise Greci Robinson MS CNS  
Trauma Program Manager*





# SHC Annual Trauma Statistics



- ~ 2700 patients in the trauma registry
  - ~ 2300  $\geq$  15 years old (Adults)
  - ~ 400 < 15 years old (Pediatric)
- ~ 1755 Admitted (65%) or
- ~ 1475 Adults admitted and 280 Pediatric admitted
  - Avg HLOS Adults = 4.9 days
  - Ave HLOS Pediatrics = 2.4 days
- Adult TQIP ~660 / year included
- Pediatric TQIP ~280/ year included

Orange book: 1 FTE/ 500-750 admissions

# Stanford Trauma Program



1.9 FTE PI Nurse Coordinator (Adult and Peds)

*Registry duties: Identifying and entering basic demographic info on all trauma patients, PI reviews, TQIP process measures*

3.6 FTE Trauma Registrars- (allowing to work at 4.0 to catch up!)

Data entry on the remainder of the 250 data elements

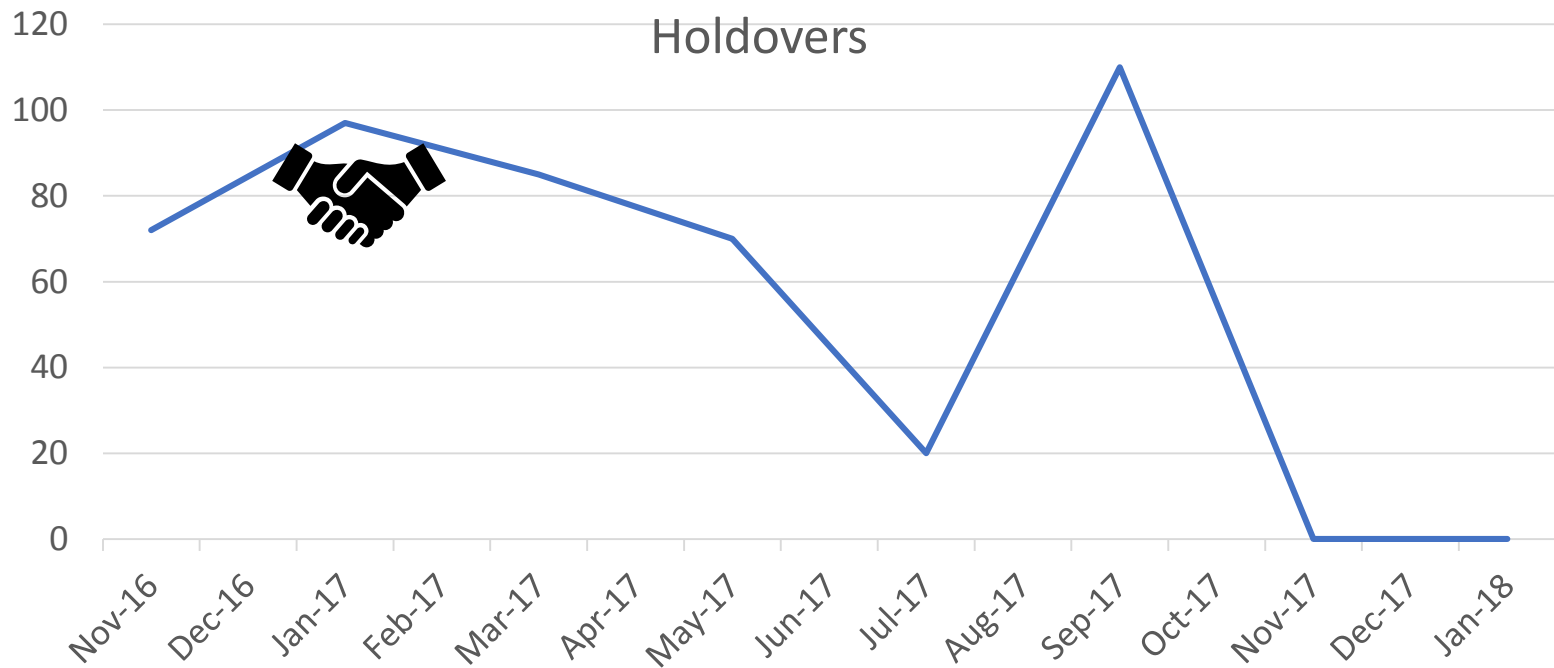
Reports for MDs research

TQIP submissions

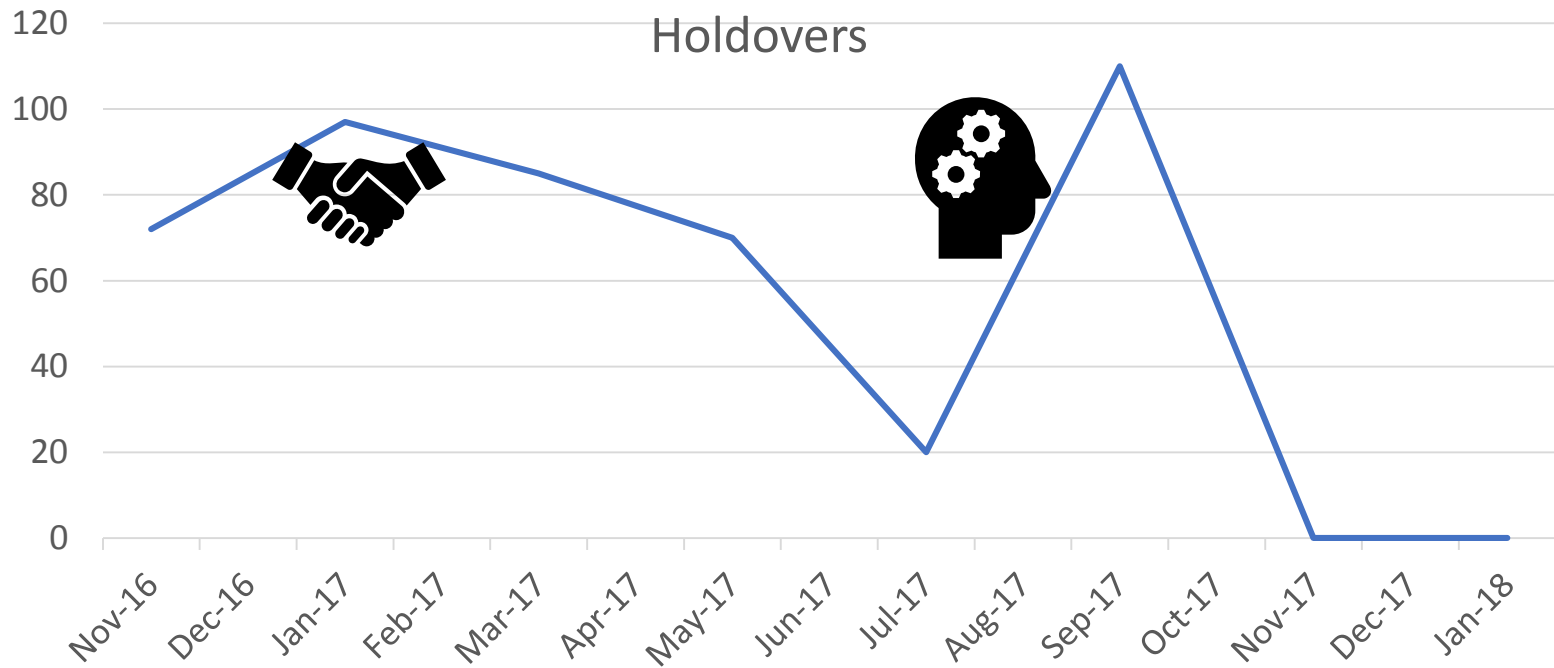
PCRs

*1755 admission/ 500= 3.5 required registry FTE*

# Stanford Trauma Program



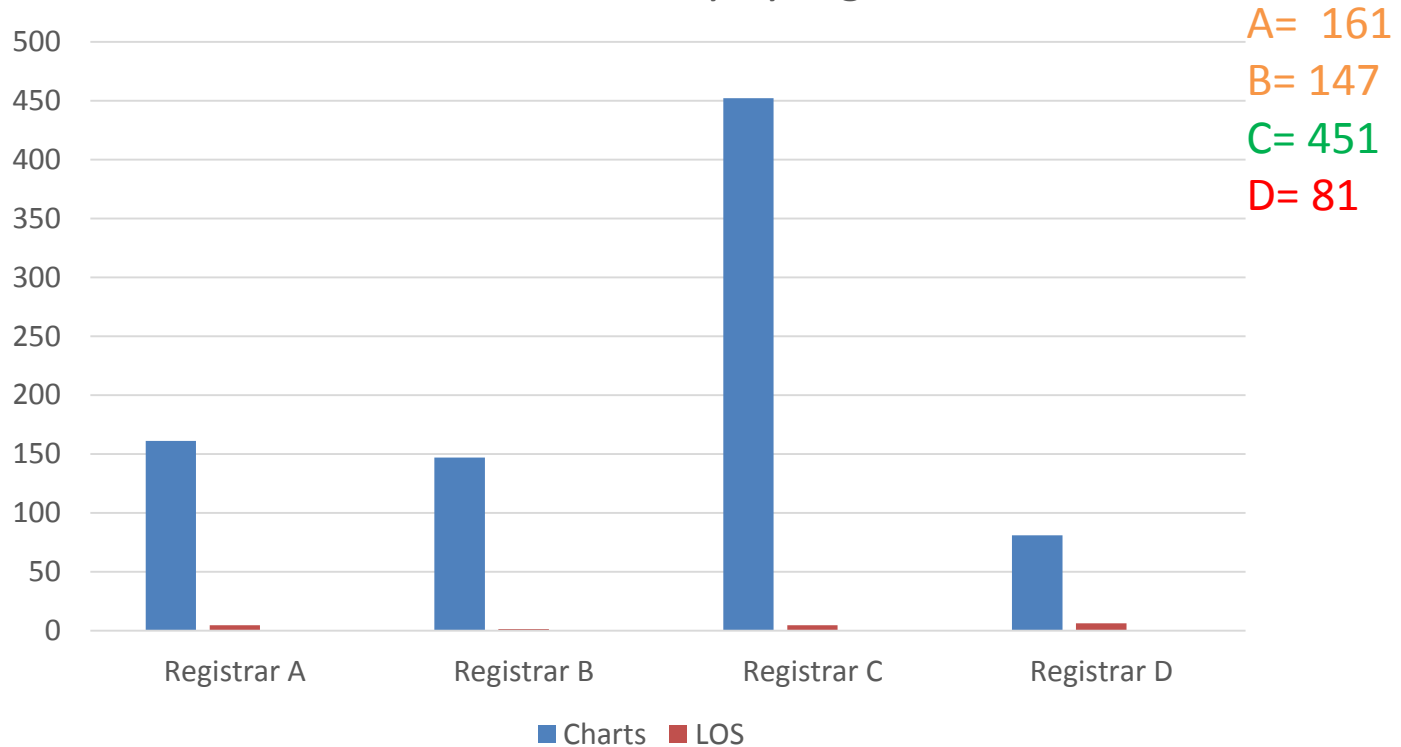
# Stanford Trauma Program



# Stanford Trauma Program



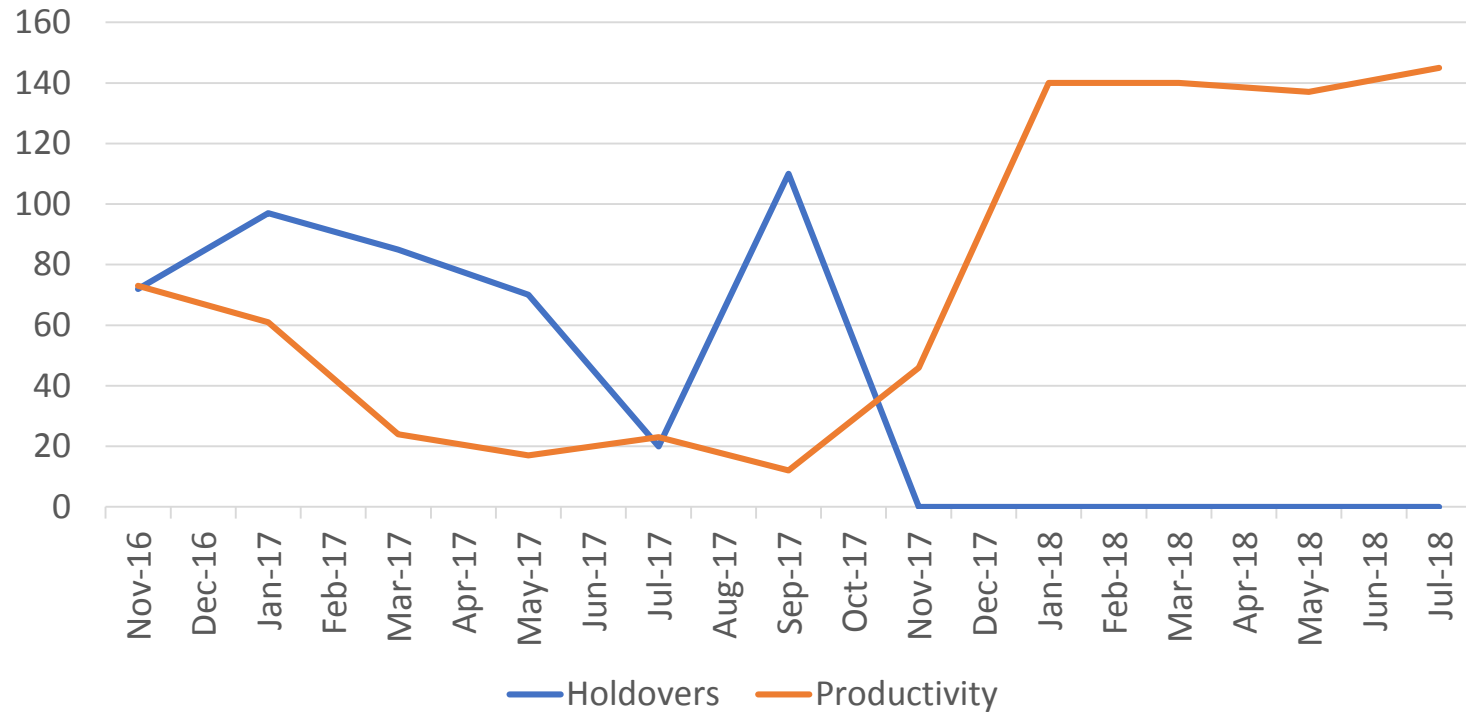
6 month Productivity by registrar



# Productivity



Productivity Map



# Interventions

- Gather data on productivity
- Identify high and low performers
- Decide on standard productivity- LOS, other competing priorities for time
- Micromanaging strategies:
  - Goal setting
  - Daily communication
  - Data Data Data!!!
  - Develop accountability
- Individualize the approach to the employee